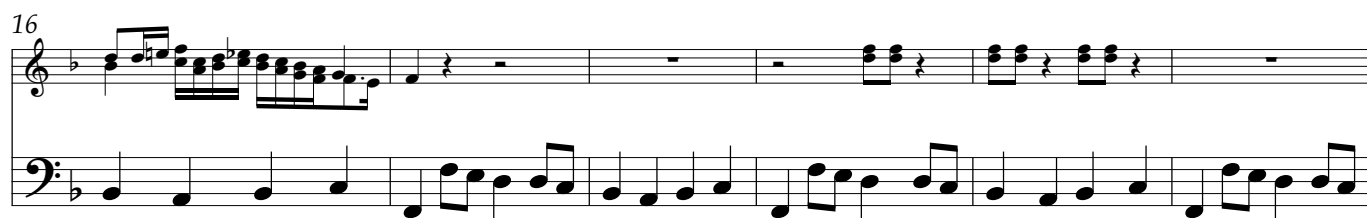


Dieterich Buxtehude
Quemadmodum desiderat cervus
 BuxWV 92

CHIACCONA \grave{a} 3

Violino I, II

Continuo



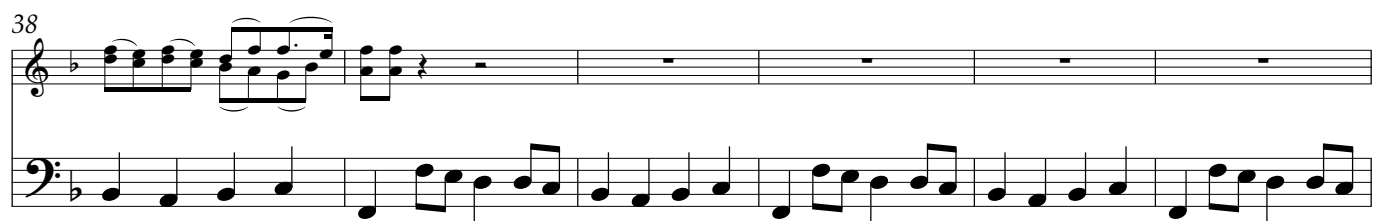
Nota bene

32



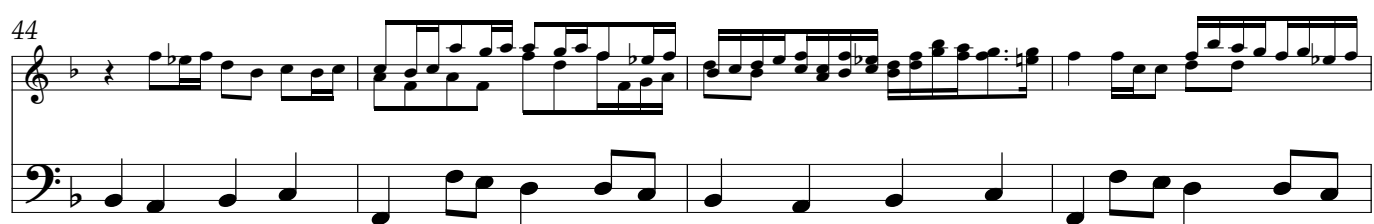
This system contains measures 32 through 37. The treble clef staff begins with a melodic line in measure 32, followed by a whole rest in measure 33, and then a series of chords in measures 34, 35, 36, and 37. The bass clef staff provides a continuous accompaniment of eighth and sixteenth notes throughout the system.

38



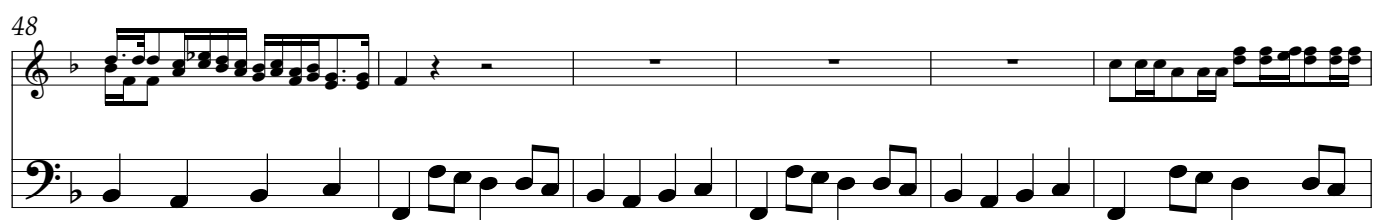
This system contains measures 38 through 43. The treble clef staff features a melodic line in measure 38, followed by whole rests in measures 39, 40, 41, 42, and 43. The bass clef staff continues with its accompaniment pattern.

44



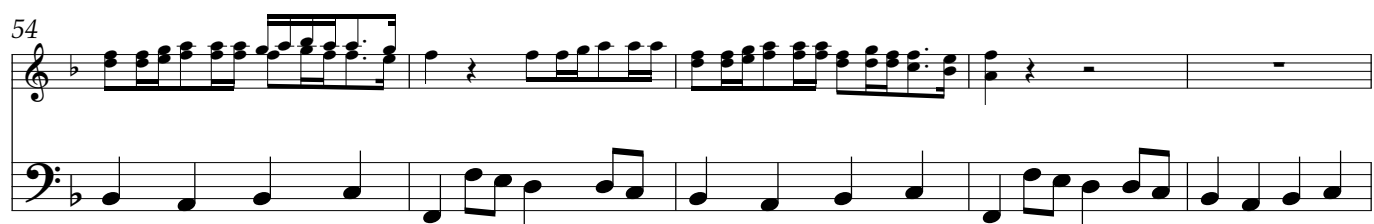
This system contains measures 44 through 47. The treble clef staff has a more active melodic line with eighth and sixteenth notes in measures 44, 45, 46, and 47. The bass clef staff maintains the accompaniment.

48



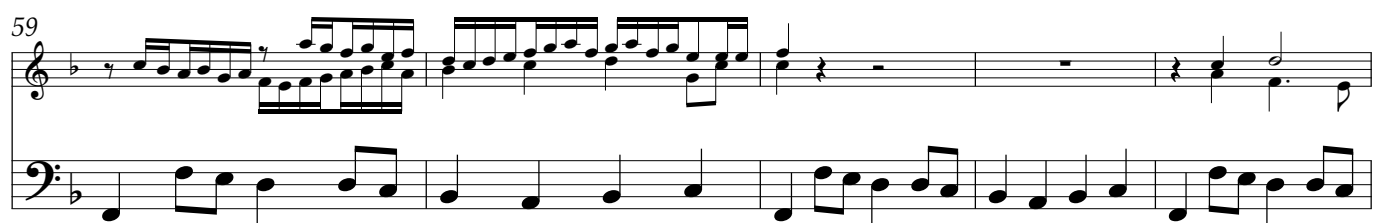
This system contains measures 48 through 53. The treble clef staff shows a melodic line in measure 48, followed by whole rests in measures 49, 50, 51, and 52, and then a final melodic phrase in measure 53. The bass clef staff continues the accompaniment.

54



This system contains measures 54 through 58. The treble clef staff features a melodic line in measure 54, followed by a whole rest in measure 55, and then a series of chords in measures 56, 57, and 58. The bass clef staff continues the accompaniment.

59



This system contains measures 59 through 63. The treble clef staff has a melodic line in measure 59, followed by a whole rest in measure 60, and then a series of chords in measures 61, 62, and 63. The bass clef staff continues the accompaniment.

64



This system contains measures 64 through 68. The treble clef staff features a melodic line in measure 64, followed by a whole rest in measure 65, and then a series of chords in measures 66, 67, and 68. The bass clef staff continues the accompaniment.

70

System 70-73: Treble clef starts with a whole rest, then a series of eighth and sixteenth note chords. Bass clef has a steady eighth-note accompaniment.

74

System 74-77: Treble clef has a complex sixteenth-note figure, then rests. Bass clef continues the eighth-note accompaniment.

80

System 80-83: Treble clef features a series of chords and eighth notes. Bass clef continues the eighth-note accompaniment.

86

System 86-89: Treble clef has rests followed by a sixteenth-note figure. Bass clef continues the eighth-note accompaniment.

92

System 92-95: Treble clef has rests followed by a sixteenth-note figure. Bass clef continues the eighth-note accompaniment.

98

System 98-101: Treble clef has rests followed by a sixteenth-note figure. Bass clef continues the eighth-note accompaniment.

104

System 104-107: Treble clef has a complex sixteenth-note figure. Bass clef continues the eighth-note accompaniment.

108

System 108: Treble clef staff features a complex melodic line with many beamed sixteenth notes and a long horizontal slur. Bass clef staff features a steady eighth-note accompaniment.

113

System 113: Treble clef staff continues with intricate sixteenth-note patterns and slurs. Bass clef staff continues with the eighth-note accompaniment.

117

System 117: Treble clef staff features dense sixteenth-note passages. Bass clef staff continues with the eighth-note accompaniment.

121

System 121: Treble clef staff includes some rests and block chords. Bass clef staff continues with the eighth-note accompaniment.

126

System 126: Treble clef staff features sixteenth-note runs and rests. Bass clef staff continues with the eighth-note accompaniment, ending with a whole rest.